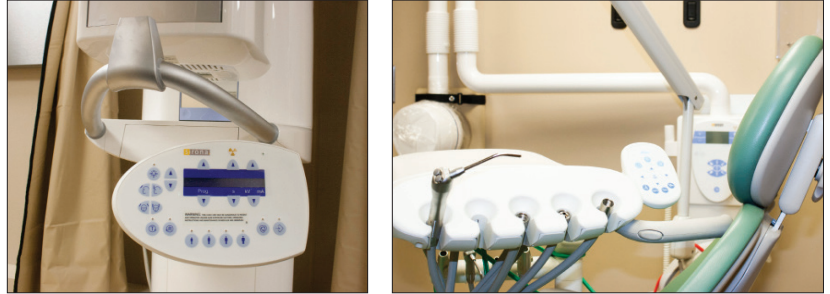


Armor Mobile Dental Coaches

Why Choose Armor for Your New Coach?

- 2 year bumper to bumper warranty
- 10 year structural warranty
- 25+ years of mobile medical knowledge and experience
- 100+ years of combined staff industry experience
- We manufacture the coach from the chassis up; no pre-fab bodies or shells
- Durable welded aluminum tubular construction
- Rivetless aluminum exterior is attractive, strong, and moisture-free
- Dedicated 24/7 service department and extensive service network
- Proudly made in USA

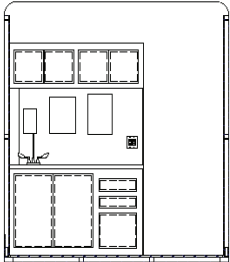


Coaches are Equipped with Standard:

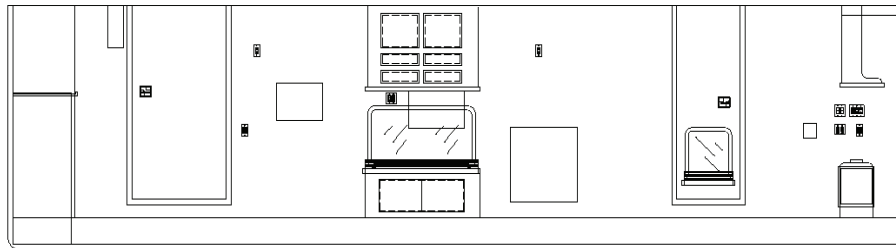
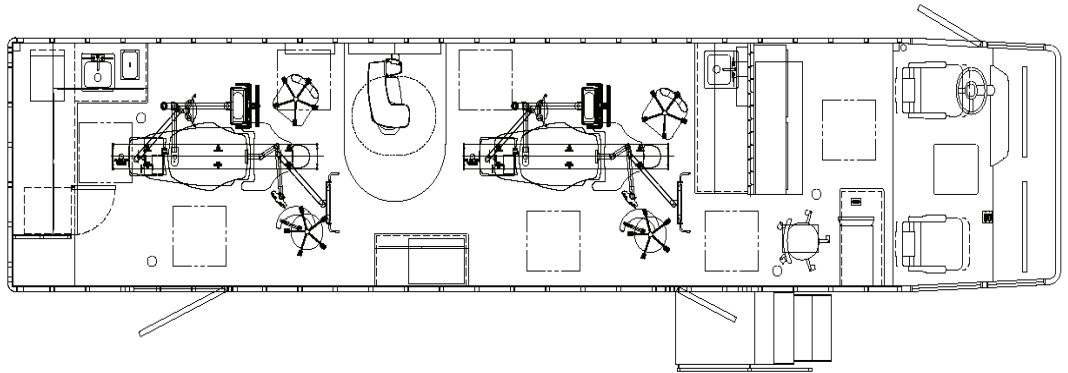
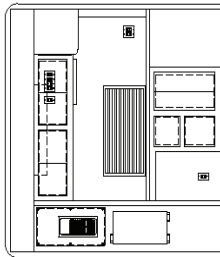
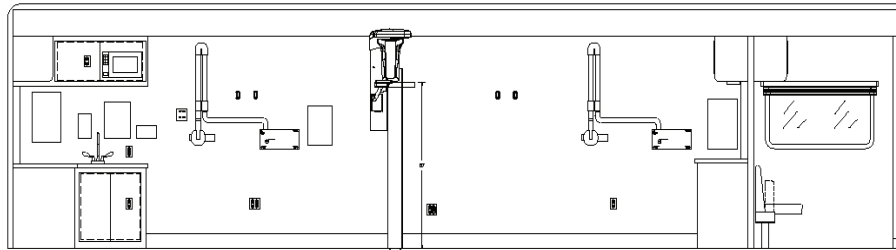
- Freightliner heavy-duty commercial chassis
- Cummins diesel engine
- 32kW Diesel generator for full off-site operation
- Platform steps for safe patient entry
- Side and rear cameras
- Automatic leveling system for quick and safe setup
- Air-ride suspension
- 4-ton central air/heating system (HVAC)
- Full ABS air-brake system



Armor Mobile Dental Coaches



FRONT EXAM CABINETS



We also offer custom floor plans, including a three-chair dental coach.